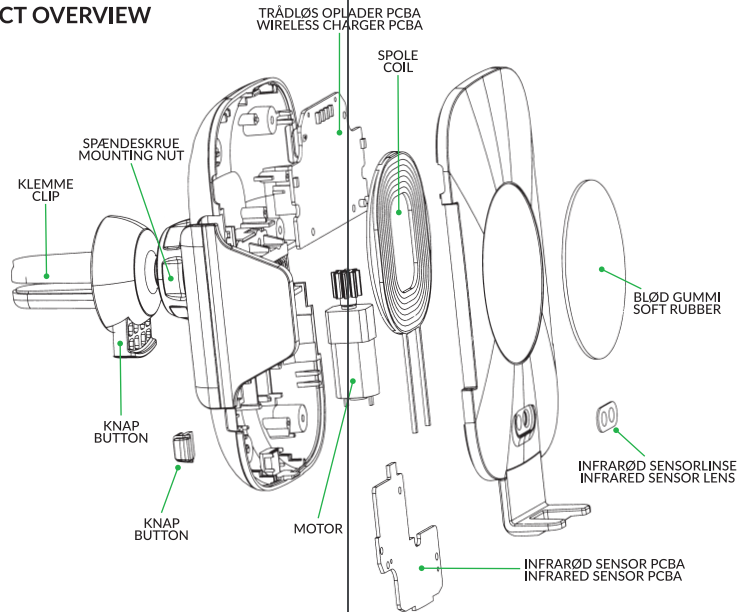


TRÅDLØS OPLADER WIRELESS CHARGER

BRUGERMANUAL USER MANUAL



PRODUKTOVERBLIK PRODUCT OVERVIEW



DK

Læs denne brugsanvisning omhyggeligt før brug og gem den til senere reference.

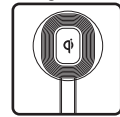
Produkt specifikationer

Hurtigoplading med trådløs oplader.
Indgang: 5 V - 2 A / 9 V - 1,67 A
Udgang: 5 V - 1,5 A / 9 V - 1,2 A
Opladningseffektivitet: 75%

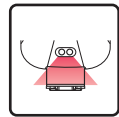
Trådløs opladningsstandard

Ikke alle enheder er kompatible med Qi trådløs opladningsstandard. Denne trådløse oplader er kompatibel med alle enheder, der er kompatible med Qi trådløs opladningsstandard. Din enhed har muligvis brug for en ekstern trådløs opladningsmodtager (ikke inkluderet) for at fungere med denne trådløse oplader.

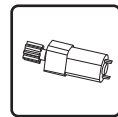
Teknologi



Wireless opladning



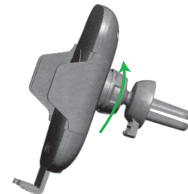
Infrarød sensor



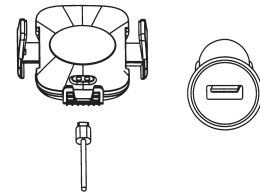
Automatisk motor

Produkt Specifikationer

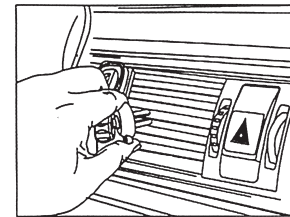
1: Drej skruen for at frigøre holderen.



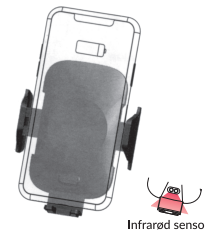
2: Tilslutning: Forbind den trådløse oplader og en USB-port med den medfølgende USB-C ledning. For at bruge hurtigopladningsfunktionen, skal outputtet fra din USB-port understøtte op til 9 V - 1.2 A.



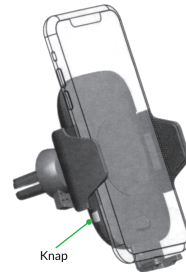
3: Tryk på knappen på klemmen, for at fastgøre holderen i ventilationskanalen. Sæt holderen fast på klemmen og juster den for at få den bedste synsvinkel. Spænd skruen igen, for at fastgøre holderen.



4: Låsemekanismen åbner automatisk, når den infrarøde sensor aktiveres. Når smartphonen placeres i holderen, lukkes låsemekanismen automatisk og griber rundt om smartphonen.

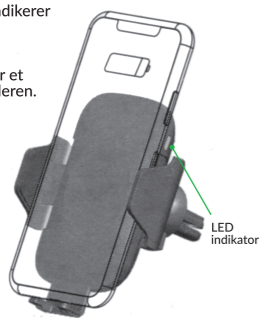


5: For at fjerne smartphonen, skal du trykke på knappen på siden af holderen og låsemekanismen løsner smartphones.



6: LED-lys på siden indikerer opladestatus:

- 1: Blåt lys angiver korrekt opladning.
- 2: Rødt lys indikerer et problem med opladeren.



LED indikator

⚠ OBS!

1. Hold opladeren væk fra vand og andre væsker.
2. Hvis du har brug for at rengøre opladeren, skal du sørge for, at den ikke er tilsluttet en strømforsyning.
3. Betjeningstemperatur: 20 - 45° C.

⚠ Opladningsfejl, LED-lys blinker.

Følgende situationer kan forårsage opladningsfejl eller høj temperatur.

- 1: USB-porten opfylder ikke kravene.
- 2: Opladningskablet er ikke i funktionsdygtigt.
- 3: Smartphonecoveret er for tykt (anbefalet covertykkelse max 2 mm).
- 4: Telefonen er ikke placeret midt på den trådløse oplader.
- 5: Der er metal eller en magnet på bagsiden af din smartphone eller coveret.
- 6: Din smartphone understøtter ikke trådløs Qi-opladning.

EN

Please read this user manual carefully before use and keep for future reference.

Product specifications

Fast charging wireless charger.
Input: 5 V - 2 A / 9 V - 1.67 A
Output: 5 V - 1.5 A / 9 V - 1.2 A
Charging Efficiency: 75 %

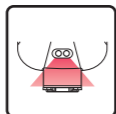
Wireless charging standard

Not all devices are compatible with Qi charging standard. This device is compatible with all devices that are compatible with Qi wireless charging standard. Your device might need an external wireless charging receiver (not included) to work with this wireless charger.

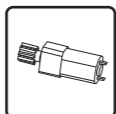
Technology



Wireless charger



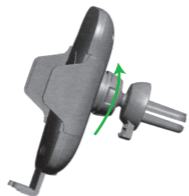
Infrared sensor



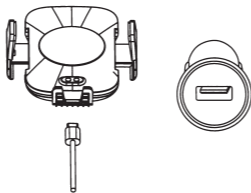
Driving motor

Product specifications

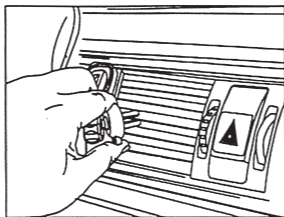
- 1: Rotate the screw cap to release the holder.



2: Input: Connect the wireless charger and a USB port with the included USB-C wire. To use the fast charging feature, the output of your USB port must support up to 9 V - 1.2 A.



3: Press the button on the clip to fix the holder in the airduct. Attach the holder and adjust for best viewing angle. Then tighten screw cap.

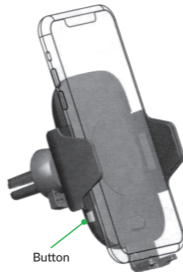


4: Place your smartphone in the holder. The locking mechanism will automatically open when infrared sensor is activated. When the smartphone is placed in the holder, the locking mechanism will automatically close to grip the smartphone.



Infrared sensor

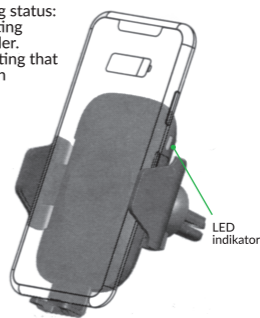
5: To remove the smartphone, press the button on the side of the holder, the locking mechanism unclamps the smartphones



Button

6: LED light indicating status:

- 1: Blue light indicating proper working order.
- 2: Red lights indicating that the charger is not in working order.



LED indikator

⚠ Attention

1. Please keep the charger away from water and other liquids.
2. If you need to clean the charger, please make sure it is not connected to a power supply.
3. Operation temperature: 20 - 45° C.

⚠ Charging failure, LED light flashing.

The following situations may cause charging failures or high temperature.

- 1: The USB port does not meet the requirements.
- 2: The charging cable is not in working order.
- 3: The smartphone cover is too thick (recommended cover thickness max to 2 mm).
- 4: The phone is not placed at the middle of the wireless charger.
- 5: There is metal or magnet on the back of the smartphone or cover.
- 6: The smartphone does not support Qi wireless charging.

I tilfælde af problemer eller spørgsmål til produktet, kontakt da venligst importøren på: info@nohro.dk eller +45 6913 2121.

In case of problems or questions about the product, please contact the importer at: info@nohro.dk or +45 6913 2121.



nohro

Nohro ApS
info@nohro.dk

MADE IN CHINA